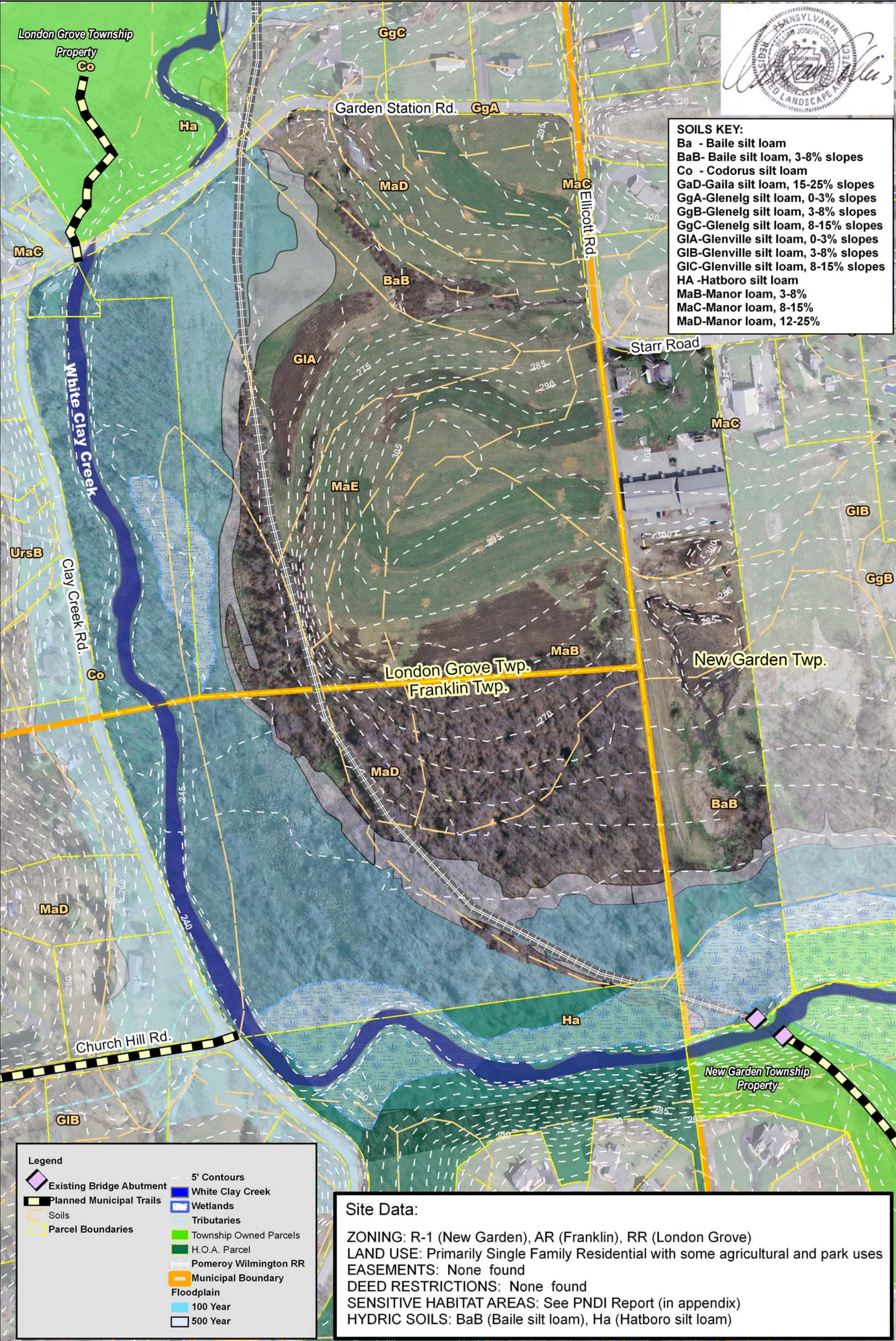


**SOILS KEY:**

- Ba - Baile silt loam
- BaB - Baile silt loam, 3-8% slopes
- Co - Codorus silt loam
- GaD - Gaila silt loam, 15-25% slopes
- GgA - Glenelg silt loam, 0-3% slopes
- GgB - Glenelg silt loam, 3-8% slopes
- GgC - Glenelg silt loam, 8-15% slopes
- GIA - Glenville silt loam, 0-3% slopes
- GIB - Glenville silt loam, 3-8% slopes
- GIC - Glenville silt loam, 8-15% slopes
- HA - Hatboro silt loam
- MaB - Manor loam, 3-8%
- MaC - Manor loam, 8-15%
- MaD - Manor loam, 12-25%



**Site Data:**

ZONING: R-1 (New Garden), AR (Franklin), RR (London Grove)  
 LAND USE: Primarily Single Family Residential with some agricultural and park uses  
 EASEMENTS: None found  
 DEED RESTRICTIONS: None found  
 SENSITIVE HABITAT AREAS: See PNDI Report (in appendix)  
 HYDRIC SOILS: BaB (Baile silt loam), Ha (Hatboro silt loam)



**BASE MAP**



**White Clay Creek Inter-Municipal Trail Link Study**  
 London Grove, New Garden and Franklin Townships  
 Chester County, Pennsylvania